

# YEPA VALENCIA GRAIN COW LEATHER S1P FO SRC TECHNICAL DATASHEET

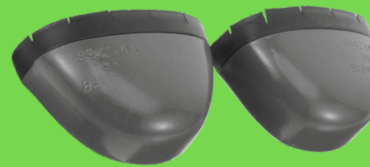
Certification: ISO 20345:2011  
Category: S1P FO SRC  
Toecap: Steel toecap (200 Joule)  
Upper: 1.8-2.0 mm grain cow leather  
Lining: 100% breathable 3D Air  
Insole: Anatomic sponge insole with heel support  
Anti Perforation: Steel midsole (1100N)  
Outsole: PU/PU dual density, SRC  
Available Sizes: 35-48 (EU)



- ✓ Reinforced Structure – Designed to complement steel midsoles for maximum sole strength.
- ✓ Heavy-Duty Durability – Engineered for high-load, high-impact industrial use.
- ✓ Exceptional Slip Resistance – Certified to SRC standard for superior grip on wet and oily surfaces.
- ✓ Oil, Fuel & Chemical Resistant – Reliable performance in harsh environments.
- ✓ Stiff & Stable Support – Ideal for demanding surfaces where flexibility is less critical.



- ✓ Ergonomic Design – Follows the natural shape of the foot for optimal support.
- ✓ Cushioned Heel Zone – Reduces pressure and impact on the heel during long work shifts.
- ✓ All-Day Comfort – Enhances overall foot comfort and reduces fatigue.
- ✓ Breathable & Antibacterial – Helps keep feet dry and odor-free.



- ✓ Maximum Impact Protection – Withstands up to 200 Joules of force.
- ✓ Industry Standard – Certified under EN ISO 20345 steel toe requirements.
- ✓ Crush & Compression Resistant – Prevents serious foot injuries.
- ✓ Reliable in Extreme Conditions – Performs consistently in heat, cold, and high-pressure environments.



- ✓ Superior Anti-Perforation – Protects against sharp objects and nails.
- ✓ Durable Steel Construction – Long-lasting and highly protective.
- ✓ Certified to EN ISO 20345 – Ensures safety in hazardous ground conditions.
- ✓ Stable Foot Support – Adds structure and protection to the sole.